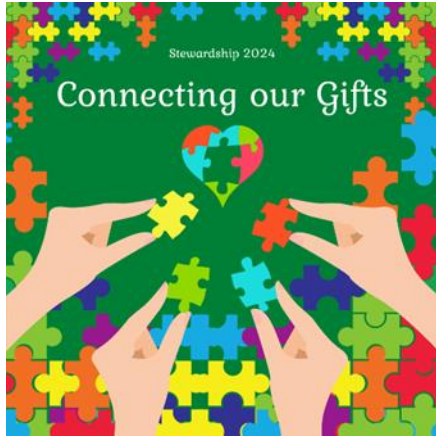


A GIVING GUIDE 2024



Each of you should use whatever gift you have received to serve others, as faithful stewards of God's grace in its various forms.

1 Peter 4:10

The following steps are intended to guide you toward a thoughtful gift you can feel good about. Do you have questions or just want to talk this through with someone? We are here, just contact Rev. Mia at church. 413-525-6341.

Step 1: Pray

Reflect on God's blessings on your life. Pray about St. Mark's impact on your life over your time here. Begin from a place of openness and gratitude.

Step 2: What is your Total Annual Household Income?

Calculate all estimated household income for 2023.

Salaries: _____

Interest, Dividends: _____

Other Income: _____

TOTAL INCOME: _____

Step 2: How much do you currently give to the Church?

Annual Giving 2023: _____

Step 3: What is the percentage?

$$\begin{array}{l} \boxed{\text{Annual Giving 2023}} \div \boxed{\text{Total Income 2023}} \\ = \boxed{} \times 100 \\ = \boxed{} \% \end{array}$$

A GIVING GUIDE 2024

Step 4: Consider the giving guide

You know your finances best. There is never any judgement about how much you choose to give. What matters is that your support of our church comes from a place of integrity, authenticity, and gratitude. Folks sometimes find the following helpful in calculating percentages of income. Experiment with picking a level from the chart.

Annual Income	Monthly Income	Monthly Pledge				
		2%	3%	4%	5%	10%
\$30,000	\$2,500	\$50	\$75	\$100	\$125	\$250
\$35,000	\$2,917	\$58	\$88	\$117	\$146	\$292
\$40,000	\$3,333	\$67	\$100	\$133	\$167	\$333
\$45,000	\$3,750	\$75	\$113	\$150	\$188	\$375
\$50,000	\$4,167	\$83	\$125	\$167	\$208	\$417
\$55,000	\$4,583	\$92	\$138	\$183	\$229	\$458
\$60,000	\$5,000	\$100	\$150	\$200	\$250	\$500
\$65,000	\$5,417	\$108	\$163	\$217	\$271	\$542
\$70,000	\$5,833	\$117	\$175	\$233	\$292	\$583
\$75,000	\$6,250	\$125	\$188	\$250	\$313	\$625
\$85,000	\$7,083	\$142	\$213	\$283	\$354	\$708
\$100,000	\$8,333	\$167	\$250	\$333	\$417	\$833
\$115,000	\$9,583	\$192	\$288	\$383	\$479	\$958
\$125,000	\$10,417	\$208	\$313	\$417	\$521	\$1,042
\$150,000	\$12,500	\$250	\$375	\$500	\$625	\$1,250
\$175,000	\$14,583	\$292	\$438	\$583	\$729	\$1,458
\$200,000	\$16,667	\$333	\$500	\$667	\$833	\$1,667

Step 5: Pray on your Pledge

How do you feel about the amount you've chosen? Does your contribution reflect your gratitude toward God's blessings in your life? What might your giving make possible for others at St. Mark's and in the community now and in the future?

When your number feels authentic to you, ask God to bless it!

Generous and Loving God, creator of all that is good and meaningful in this world, thank you for the gifts you have given me. As a faithful steward, help me to connect those gifts to the needs of your creation with my time, with my love, and with this pledge of my money that I make to St. Mark's. Bless this pledge that, when connected to my neighbor's, may be part of something greater than myself. Bless me that in my giving I may discover a love so powerful that nothing can dim its beauty.

In the name and example of Jesus I pray. Amen.

Step 6: Complete your Pledge Card and bring it to church on October 29, 2023!